

The RPA (Regional Public Account System) Units are part of the National Statistical System (SISTAN), the network of public and private bodies providing official statistics.

**Comprehensive regional data:**

- **Overall representation of public revenue and public expenditure.**
- **Multi-level (central and local) analysis of the financial flows resulting from the consolidated accounts of public bodies.**

**Reliable data:**

- **Continuous monitoring within the system and cross-checks with others databases ensure data quality.**

**Consolidated data:**

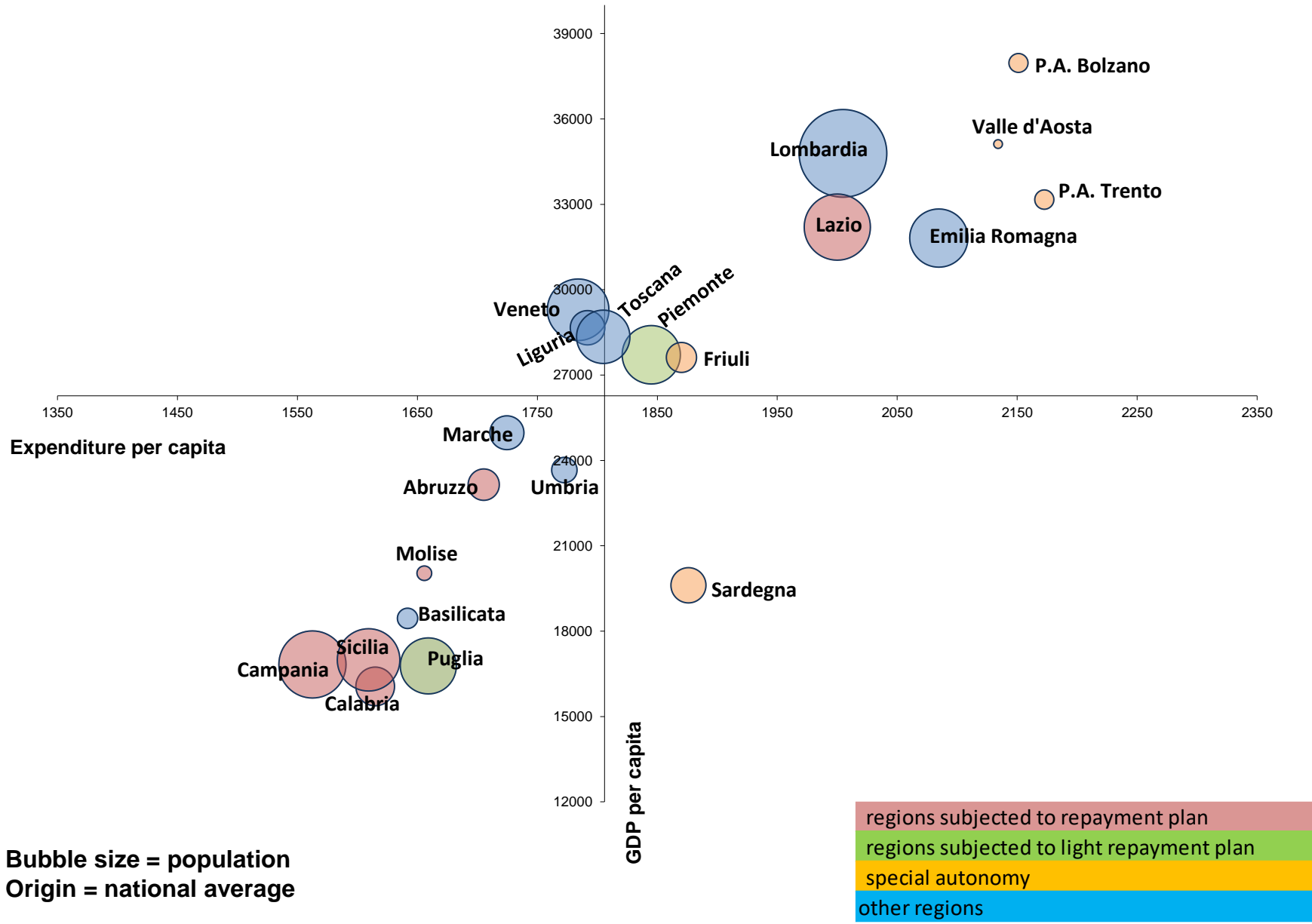
- **Elimination of the flows between the different government levels and subsidiary companies and bodies: expenditure is attributed to final payers.**

**Disaggregated data**

- **Expenditure: 29 areas of activity and economic categories**
- **Revenue: economic categories**

# Public health expenditure per capita / gdp per capita

## Average 2010-2014



# Public health expenditure per capita / Performance

## Average 2011-2013

